



Please wear face coverings and use hand sanitizers as you enter the school office



We encourage you to frequently wash your hands, or use hand sanitizer provided where this is not possible



Please avoid sharing pens We advise you to bring one of your own

Adults to keep 2 metres from other adults as much as possible



Avoid touching mouth, eyes and nose and encourage the children to do the same

Use a simple 'no touching' approach for young children to understand the need to maintain distance

The number of people using the toilets at any one time is limited

If the child you are working with shows any signs of being unwell, please alert the class teacher immediately

Please avoid sitting face to face with a child- sit side by side. Avoid working with the same child for more than 15 minutes



Please be aware that we will contact you if there is a positive case of coronavirus in school and you will be advised to isolate for 14 days if you have been in close contact with the individual

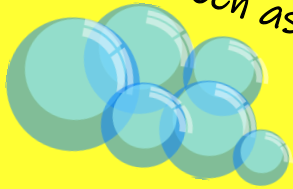


Non-staff visitors must leave contact details in visitors book for NHS Test + Track

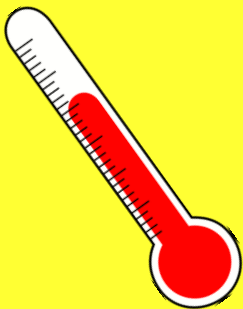


Visitors coming onto site  
without an appointment is not  
permitted

Minimise your contacts and mixing  
between people. Please keep to the  
bubble you have been asked to  
work in



Please do not come to school  
if you have a temperature  
(37.8° +), a cough or loss of  
smell and taste



# Coronavirus Information

September 2020



Castle Hill Primary School

Abbotswood Road

GL3 4NU

[admin@castlehill.gloucs.sch.uk](mailto:admin@castlehill.gloucs.sch.uk)

01452 863380

